

The State of Ohio

Total listed Types and Towns: 1293



4.5173



2.4564



2.4183



4.4514 w/c



2.45 n/c



2.615

The state is not normally abbreviated, unless listed (ie: O or OH)

The following are illustrations of Types referenced by the PIC Type Note, in the listings.



2.43(8/4)



2.4573



Canal Fulton / Oh 2.528005



2.45 OHIO inv



2.45(45/44)



3.464305 CINCINNATI BR.



1.2174 Farmersville



1.45434



2.750008

From



2.456254



2.43(93/62)



1.45(62/63)



1.4543



2.45(4/9)



3.5114



2.41(63/65)



2.41832



4.43(43/54)



2.41551



2.41751



2.45741



4.6714



2.67(1/5)



2.65(44/94)

The following are examples of different styles found from Ohio towns, with type numbers.



1.1573



1.515



2.15



2.4114



2.4144



2.415



0.4153 heavy impr



2.4154 CON



2.4163



2.4164



2.4174



2.4183



2.4184 and one from OTWAY



2.4182 CON



2.4193



2.4194



2.43(5/9)



2.45 n/p



2.45 w/p and another full impr





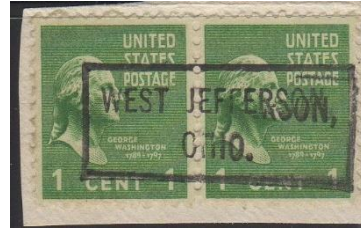
2.4514



2.4514 CON



2.45(1/9)



2.4543



2.4544



2.455



2.4562



2.4582



2.4563



2.4564



2.45642



2.456454 mixed font



2.4574 and a later example



2.45942 heavy impr



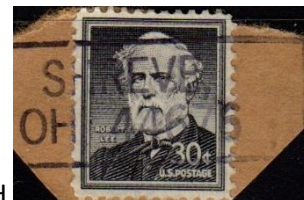
2.46 CON



OH 2.46005



2.464305



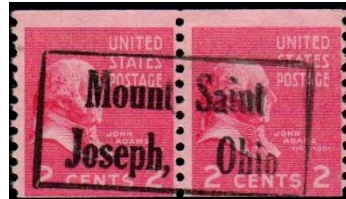
2.467005



2.5114 and another example



2.515 and a later example



2.55



2.5514



2.5544



2.5564



2.6114



2.615



2.63(5/9)



2.65 and a later heavier impr



2.65(1/9)



2.656



2.659



4.4113



4.4113



4.4113



4.413*3 and a second example



4.4154



4.4174



4.4153



4.41631



4.41632



4.4173



4.415354 flared M



4.41(53/73)



4.4183



4.4513 and another example



4.4514 CON n/c



4.4514 w/c



4.4543 and another example



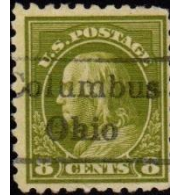
4.4544 and another



4.4574



4.5153 and another copy



4.5173 and another



4.65(13/44)



4.7562



4.8563



VBR 7.4544 CON



SLR 7.4643



DLR 7.4643 and another example



Type	Note	OHIO Town	March 19, 2019	Note	Usage
2.45642		ADA,			1913
4.4183		ADA			1926, 31, 32, 33
4.41832		ADA			1926
1.45		AKRON			1938
2.4546		AKRON			1908
0.4184		AKRON			1917
4.4173		AKRON			1913, 14, 17, 22, 25, 26, 32
4.417402		AKRON			1932
4.45434		AKRON,			1917, 23BH
4.45444		AKRON			1917
2.45		ALBANY,			1926, 42
2.45	CON	ALBANY,			1960
2.4163		ALEXANDRIA,			1922
2.4183		ALGER,			1938
2.4574		ALGER,			1926, 33
2.458		ALGER,			1926
1.215		ALICE,			1934
4.4153		ALLIANCE			1922, 32
4.4514	CON	ALLIANCE,			1918, 22, 26, 31, 38
4.4514		ALLIANCE,			1926, 31
4.4543		ALLIANCE,			1918, 22, 23, 26
2.4163		AMANDA,			1940
2.615		AMSTERDAM			1938
2.63(5/9)		AMSTERDAM			1954
1.118		ANDOVER,			1954
2.4163		ANDOVER,			1938
2.45		ANDOVER		CQ	1931
2.4546		ANDOVER,			1954
2.4194		ANNA,			1938
2.45752		ANNA,			1938
2.63(5/9)		ANNA			1938
0.41832		ANNA		CQ	1926, 31
2.4183		ANSONIA,			1931
2.43(5/9)		ANSONIA			1954
2.456454		ANSONIA,			1938
2.45		ANTWERP,			1926, 32
2.4563		ANTWERP,			1938
2.4574		ANTWERP		CQ	1926
1.7573		APPLE / CREEK, / OHIO			1922, 26
2.4143		APPLE CREEK,			1938
2.456454		APPLE CREEK		CQ	1954

2.551		APPLE CREEK,		1931
2.5544		APPLE CREEK,		1931
2.45		ARCANUM,		1931, 34
2.45004		ARCANUM	CQ	1917
4.4544		ARCANUM		1926, 31
2.415		ARCHBOLD	CQ	1917
2.45	CON	ARLINGTON,		1954
2.659		ARLINGTON		1938
1.1543		ASHLAND,		1954
2.4193		ASHLAND	CQ	1926, 31
4.45444		ASHLAND,		1917, 22
2.45		ASHLEY,		1931
2.4574		ASHLEY,		1926, 38
2.659		ASHLEY		1938
0.45634		ATHENS		1923, 25SD
2.43(84/45)	PIC	ATTICA	CQ	1917
2.45	CON	ATTICA,		1938, 54
2.4553		ATTICA,		1938
2.4574		ATTICA	CQ	1932
2.4596		ATTICA,		1938, 40
2.45		AURORA,		1954
2.45		AVON,		1938
2.45	CON	AVON,		1954, 62
2.456454		AVON,		1938
2.4163		BAINBRIDGE	CQ	1926, 38
1.4573		BALTIC,		1926
1.154305		BALTIC,		1945
2.460005		BALTIC, / OH		1971
2.4574		BALTIC,		1922
2.459		BALTIC,		1926, 38
2.659		BALTIC		1959
2.45	CON	BALTIMORE,		1954, 59, 60
2.4563		BALTIMORE,		1926, 32, 33
2.659		BARTLETT	CQ	1938
2.459		BASCOM	CQ	1922
1.1519		BATAVIA,		1938, 40
2.4163		BATAVIA,		1926, 31
2.45	CON	BATAVIA,		1954
2.4544		BATAVIA,		1938, 60
2.5544		BATAVIA,		1938
2.5564		BATAVIA	CQ	1923
2.460005		BATH, / OH		1954
2.6544		BAY VILLAGE	CQ	1938

2.4544		BEACH CITY,		1923
2.4114		BEALLSVILLE,		1938
2.45	CON	BEAVER,		1954
1.150001		BEDFORD,		1931D
2.4163		BEDFORD,		1926, 30
2.45		BEDFORD	CQ	1917
2.45	CON	BEDFORD,		1938
2.5564		BEDFORD		1922, 23, 26
2.45		BELLAIRE,		1926, 32
2.4143		BELLE CENTER,		1926, 31, 38
2.451		BELLEFONTAINE	CQ	1926
2.55		BELLEFONTAINE	CQ	1914
2.555		BELLEFONTAINE,		1922, 23
1.8174		BELLE / VALLEY / OHIO	CQ	1923
2.45		BELLVILLE	CQ	1926, 38
2.45	CON	BELLVILLE,		1954
1.1163		BELMONT,		1943SD
2.4574		BELMORE		1942
2.45	CON	BELOIT,		1954
2.457		BELPRE,		1968
2.4574		BELPRE,		1938
2.63(5/9)		BELPRE		1938, 59D
2.4564		BEREA,		1917D
2.459		BEREA,		1934
4.4174		BERGHOLZ		1925SD
2.6514		BERLIN HEIGHTS	CQ	1908
2.615		BERLIN HEIGHTS,		1922
2.45		BETHEL,		1922
2.45	VAR	BETHEL,		1954
2.4574		BETHEL	CQ	1931
2.459		BETHEL	CQ	1938
2.45		BETHESDA	CQ	1932
2.4543		BETHESDA,		1946
2.4563		BETHESDA,		1938
2.45		BEVERLY,		1928SD, 38
4.4544		BIG PRAIRIE		1938, 40
7.4543	DLR	BIG PRAIRIE		1917, 22, 23
2.63(5/9)		BLOOMDALE	CQ	1938
1.1173		BLOOMVILLE,		1938
2.415		BLOOMVILLE,		1932
2.4174		BLOOMVILLE	CQ	1926
2.65		BLOOMVILLE,	CQ	1923
2.656		BLOOMVILLE,		1938, 40

2.4163		BLUFFTON,		1926, 28SD, 30, 31, 38, 40
2.45		BLUFFTON	CQ	1917, 19
2.4544		BLUFFTON	CQ	1931
2.455		BLUFFTON	CQ	1922
2.63(5/9)		BLUFFTON	CQ	1938
2.415		BOLIVAR		1938
2.4574		BOLIVAR,		1921, 26, 32, 38, 40
2.4163		BOWERSTON,		1938
2.45	CON	BOWERSTON,		1954
2.455		BOWERSTON,		1937
2.5544		BOWLING GREEN	CQ	1908
4.4513		BOWLING GREEN,		1926, 40
4.5513		BOWLING GREEN		1918, 22, 26, 31, 32
2.45		BRADFORD,		1922
2.460005		BRADFORD / OH	CQ	1957SD
2.4573	PIC	BRADNER		1938
2.459		BRADNER		1942
2.415		BRECKSVILLE		1931
4.4154		BRECKSVILLE	CQ	1926
2.4163		BREMEN	CQ	1938
2.4193		BREMEN	CQ	1930, 38
2.45		BREMEN,		1926
2.4574		BREMEN	CQ	1922
2.459		BREMEN		1938
2.45		BREWSTER		1912
2.4154		BRIDGEPORT,		1922, 26, 32
2.45		BRIDGEPORT	CQ	1954
2.4554		BRIDGEPORT,		1926, 31, 37
2.4563		BRIDGEPORT,		1926, 33
2.45		BRILLIANT,		1938
2.45	CON	BRILLIANT,		1954
2.4563		BROOKVILLE	CQ	1926, 38
2.45	CON	BRUNSWICK	CQ	1917
2.63(5/9)		BRUNSWICK	CQ	1938
2.43(5/9)		BRYAN		1954
2.46	CON	BRYAN, / OH		1968, 69
2.4574		BRYAN,		1912, 14, 17
2.4514		BUCKEYE LAKE	CQ	1926
4.45141		BUCYRUS		1922, 26, 25SH
4.4543		BUCYRUS,		1922, 23, 25, 25SH
2.63(5/9)		BURGHILL		1938
2.45		BURGOON	CQ	1938
2.4193		BURTON,		1938, 40

2.63(5/9)		BURTON		1954, 59
1.159		BUTLER,		1938
2.4574		BUTLER		1954
1.118301		BYESVILLE	nSt	1938
1.1543		BYESVILLE,	nSt	1938
1.2513		BYESVILLE,		1938
1.254301		BYESVILLE	nSt	1938
2.418		CADIZ,		1922
2.45	CON	CALDWELL	CQ	1938
2.460005		CALDWELL, / OH		1968
2.45554		CALDWELL,		1938, 45
2.4563		CALDWELL	CQ	1917
2.63(5/9)		CALDWELL		1938
2.659		CALDWELL		1938
4.4154		CALDWELL	CQ	1917
2.4563		CALEDONIA	CQ	1931
2.4194		CAMBRIDGE	CQ	1922, 26
4.4154		CAMBRIDGE	CQ	1917, 22, 23
4.4174		CAMBRIDGE		1922, 26, 31, 32
2.45	CON	CAMBRIDGE,		1914, 17
2.4554		CAMBRIDGE	CQ	1914
2.4553		CAMDEN,		1938
2.4594		CAMDEN	CQ	1938
2.5114		CAMP DENNISON	CQ	1923
2.528005	PIC	CANAL FULTON / OH		1968
2.5543		CANAL WINCHESTER	CQ	1938
1.515		CANTON		1917
2.1644		CANTON, OH		1971
2.45		CANTON,		1922
2.45	CON	CANTON,		1954, 61
0.4154		CANTON		1926
0.45534		CANTON		1916
2.415		CARDINGTON	CQ	1932
2.43(5/9)		CAREY		1954, 59
2.45		CAREY,		1954
2.45		CARROLL		1914, 17
2.4563		CARROLL	CQ	1938
2.6594		CARROLL		1938
2.4114		CARROLLTON,		1922, 26, 30, 31, 32, 34
2.4143		CARROLLTON,		1938, 40
2.45		CARROLLTON,		1928SD
2.45	CON	CARROLLTON,		1954, 57, 59D
2.455		CARROLLTON,		1926

2.63(5/9)		CARROLLTON		1938
2.65		CARROLLTON,		1908, 13, 14, 16, 26
2.415		CASTALIA	CQ	1926
2.460005		CECIL, / OH		1977
2.4544		CEDARVILLE	CQ	1917
4.41631		CELINA		1926, 32
4.45441		CELINA	CQ	1923
2.4114		CENTERBURG,		1922, 26, 31, 36
2.55		CHAGRIN FALLS	CQ	1908
2.45	CON	CHARDON	CQ	1931D, 61
2.460005		CHARDON, / OH		1968
2.659		CAHRDON		1951SD
1.156254		CHATFIELD,		1954
2.45		CHATFIELD,		1922
2.615		CHESTERLAND		1942
2.611		CHICAGO JUNCTION,		1913
4.4513		CHILLICOTHE,		1922, 25
2.45	CON	CHIPPEWA LAKE,		1954
1.1543		CINCINNATI,		1952
1.4563		CINCINNATI \\ P. O. ANNEX		1930D
3.461405	PIC	CINCINNATI, OH \\ DEL FAIR BR.		1970
4.4113		CINCINNATI		1913, 17-17DOC, 22-23, 26, 28A, 32
4.413*3		CINCINNATI		1917, 17D, 18, 20, 22, 23
4.4113		CINCINNATI,		1922, 23, 26, 28SD, 32
4.4153		CINCINNATI		1916, 17, 18, 19, 22, 23, 24, 26
4.4513		CINCINNATI		1922, 23, 26, 28SD, 30, 31, 32, 33
4.4514		CINCINNATI,		1917, 19
4.4514		CINCINNATI		1922-23, 25SD, 26-34, 38, 40
4.454302		CINCINNATI,		1917, 22, 23, 25, 25SD, 26
4.4543		CINCINNATI		1922, 23, 26, 32
4.45444		CINCINNATI		1922, 23
5.3513		CINCINNATI,		1922, 23, 26
7.4513	VBR	CINCINNATI		1908, 13, 14, 15, 16
1.25	CON	CIRCLEVILLE,		1918
2.4143		CIRCLEVILLE	CQ	1926
4.4113		CIRCLEVILLE		1917D, 22, 26
4.45134		CIRCLEVILLE,		1917
4.4513		CIRCLEVILLE,		1922
4.4513		CIRCLEVILLE		1926, 32
7.4543	DLR	CIRCLEVILLE		1917, 18
2.4553		CLARINGTON,		1938
2.55		CLARINGTON	CQ	1908, 12
2.45	CON	CLARKSTON,		1954

2.460005		CLAYTON, / OH		1971
2.45	CON	CLEVELAND,		1938, 54, 68
3.5143		CLEVELAND, OHIO \\ COLLINWOOD STATION		1926
4.4113	PRO	CLEVELAND		1922, 23, 26, 28, 30, 31, 32
4.4514	PRO	CLEVELAND		1922, 23, 25SD, 26, 28SD, 29-35
4.4514		CLEVELAND,		1917, 21, 22, 23, 25SD
4.4543		CLEVELAND,		1922, 23, 25
4.5173		CLEVELAND		1914, 17, 17DOC, 18
2.43(5/9)		CLEVES		1938
2.45		CLEVES		1917
2.45	CON	CLEVES,		1954
2.4553		CLEVES,		1938
1.1173		CLINTON,		1938
4.4174		CLINTON		1929
2.455		CLOVERDALE,		1938
2.456454		CLOVERDALE,		1958
4.4154		CLYDE		1916, 26
4.4174		CLYDE		1922, 26, 30, 31
2.4154		COLDWATER		1917
2.45		COLDWATER	CQ	1912
2.4514		COLDWATER	CQ	1911D
4.4154		COLDWATER		1922
2.4114		COLLEGE CORNER	CQ	1919
2.5114		COLLEGE CORNER	CQ	1912, 17
0.4513		COLLEGE CORNER	CQ	1931
2.45	CON	COLLINS,		1954
2.4154		COLUMBIANA,		1926, 30, 30D, 31, 38
2.45	CON	COLUMBIANA,		1938, 53, 55
2.451	CON	COLUMBIANA,		1954
2.4553		COLUMBIANA	CQ	1938
2.4563		COLUMBIANA,		1922, 26, 32
7.4543	DLR	COLUMBIANA		1917
2.451		COLUMBIA PARK	CQ	1970
2.460005		COLUMBIA STATION / OH	CQ	1979
1.2113		COLUMBUS,		1918
1.2143		COLUMBUS,		1917, 23
1.1573		COLUMBUS,		1938
2.4154		COLUMBUS	CQ	1922
4.4173		COLUMBUS		1914
4.5173		COLUMBUS		1916, 17, 17D, 17DOC, 17SD, 18
2.4514		COLUMBUS GROVE	CQ	1926
2.5514		COLUMBUS GROVE	CQ	1926

2.65(44/94)		COLUMBUS GROVE	CQ	1938
1.5173		CONVOY		1922
2.45		CONVOY,		1938
2.45	CON	CONVOY,		1938, 54
2.45644		CONVOY	CQ	1917
2.4574		CONVOY	CQ	1922, 37
2.459		CONVOY		1938, 42
2.455		COOLVILLE,		1926
2.4163		CORNING,		1938
2.455		CORNING,		1932
2.4563		CORNING,		1926, 31
2.460005		CORNING, / OH		1979
4.4174		CORTLAND		1932, 33
2.4544		COSHOCTON	CQ	1914, 17
4.4113		COSHOCTON,		1923
2.45		COVINGTON	CQ	1913C, 14
2.45	PIC	COVINGTON	CQ	1913
2.45	CON	COVINGTON	CQ	1938
2.457005		COVINGTON		1964
2.659		COVINGTON		1940, 54
2.45(45/44)	PIC	CRESTLINE,		1914
2.63(5/9)		CRESTLINE		1938
2.45		CRESTON	CQ	1922
2.415		CROOKSVILLE,		1917
2.4163		CROOKSVILLE,		1922, 26, 32
2.45	CON	CROOKSVILLE,		1908, 12
2.65		CROOKSVILLE		1926
1.555		CROTON,		1922
4.4154		CUMBERLAND		1926, 38
2.45		CUSTAR,		1954
4.4154		CUSTAR		1922
1.2174		CUYAHOGA		1908
2.45		CYGNET,		1917D, 22
2.45		CYGNET		1921, 26
2.63(5/9)		CYGNET		1938
2.45		DALTON,		1948
2.455		DALTON,		1922, 26, 30D, 32, 38
2.45		DANVILLE	CQ	1912
2.45	CON	DANVILLE,		1938
2.455		DANVILLE	CQ	1926, 30
2.63(5/9)		DANVILLE		1938, 54, 60
1.2543		DAYTON,		1968
1.45624		DAYTON,		1917DOC

4.41731		DAYTON		1917, 17D, 17DOC,18, 19, 20, 22
4.4183		DAYTON,		1922, 23
4.45434		DAYTON,		1917, 21, 22, 23
4.4544		DAYTON,		1917, 22, 23, 23A, 25SH, 26, 32
4.4544		DAYTON		1922, 23, 25SD, 26, 32
4.45444		DAYTON,		1917, 21, 22, 23BH
4.4574		DAYTON		1917, 21, 22
2.4174		DEFIANCE,		1913
2.45		DEFIANCE,		1914
2.45	CON	DEGRAFF,	SMe	1954
2.455		DELAWARE,		1911, 14, 17, 18, 22
4.45434		DELPHOS,		1922, 26, 31
2.418		DELTA,		1917, 22, 23, 26
2.4193		DELTA		1926
2.45		DELTA,		1938
2.45	CON	DELTA,		1938, 54
2.4574		DELTA	CQ	1908
2.459		DELTA,		1926, 31, 32
1.45	CON	DENNISON,		1914
2.45		DESHLER,		1938
2.4114		DEXTER CITY	CQ	1917
2.459		DIAMOND	CQ	1913
2.4114		DILLONVALE,		1938
2.451		DILLONVALE	CQ	1938
2.659		DILLONVALE		1938
2.460005		DONNELSVILLE, / OH		1962
1.1544		DORSET,		1954
2.4143		DOYLESTOWN	CQ	1933, 38
2.45		DOYLESTOWN,		1932
2.45	CON	DOYLESTOWN	CQ	1938
2.415		DRESDEN	CQ	1930
2.460005		DRESDEN / OH	CQ	1954
2.615		DRESDEN		1954
2.460005		DUBLIN, / OH		1954
2.415		DUNKIRK	CQ	1917
2.45		DUNKIRK,		1913
2.4563		DUNKIRK,		1938, 60
2.457		DUNKIRK,		1954
2.556		DUNKIRK	CQ	1926
2.4514		EAST COLUMBUS,		1926
2.5114		EAST FULTONHAM,		1938
2.45(1/9)		EAST LIVERPOOL		1938
2.457		EAST LIVERPOOL,		1968

2.63(5/9)		EAST LIVERPOOL		1938
2.63(5/9)		EAST SPARTA	CQ	1938
2.4564		EATON,		1934, 38
2.455		EDGERTON	CQ	1917, 32
2.659		EDGERTON	CQ	1938
2.45752		EDON,		1930, 31
2.45		ELDORADO	CQ	1938
2.4194		ELLET,	Sta	1938
2.415		ELMORE	CQ	1922
2.4183		ELMORE,		1923, 26, 33
2.45		ELMORE	CQ	1922
2.659		ELLSWORTH	CQ	1938
2.45	CON	ENGLEWOOD	CQ	1954
2.63(5/9)		ENGLEWOOD	CQ	1954
2.45		FAIRFIELD,		1926, 31, 38
2.4563		FAIRFIELD	CQ	1931
1.2174	PIC	FARMERSVILLE, \\ FROM		1937
2.45	CON	FARMERSVILLE		1913
2.4543		FARMERSVILLE,		1938
2.55		FARMERSVILLE	CQ	1950
2.415		FAYETTE,		1922
2.45		FAYETTE	CQ	1938
2.4544		FAYETTE	CQ	1968
2.63(5/9)		FAYETTE		1954
2.659		FAYETTE		1938
2.4516		FAYETTEVILLE	CQ	1928D
2.55		FAYETTEVILLE,		1963
4.4173		FINDLAY		1917D
4.4544		FINDLAY		1922, 26, 28SH, 32
4.4544	PRO	FLAT ROCK		1938
2.45		FLUSHING	CQ	1917
2.4544		FLUSHING,		1922
2.4114		FORT JENNINGS,		1917, 21
2.4143		FORT JENNINGS,		1926, 30, 38
2.55		FORT JENNINGS		1912
2.4114		FORT LORAMIE,		1922, 32
2.4143		FORT LORAMIE,		1926
2.4154		FORT LORAMIE	CQ	1923
2.515		FORT RECOVERY,		1917, 23
4.4113		FOSTORIA	CQ	1917D, 22, 26, 32
4.41531		FOSTORIA,		1922, 23
4.4514		FOSTORIA,		1917D, 22, 23, 26, 32
4.45434		FOSTORIA	CQ	1917, 17D, 22

2.4163		FRANKFORT,		1938
2.45(14/44)		FRANKFORT	CQ	1922
4.4514		FRANKFORT		1917, 22, 26, 32
4.4113		FRANKLIN,		1917D, 22
4.4513		FRANKLIN,		1922
4.4514		FRANKLIN	CQ	1917D, 22
2.5114		FREDERICKSBURG	CQ	1938
2.4114		FREDERICKTOWN	CQ	1917
2.451	CON	FREDERICKTOWN,		1926, 32
2.55	CON	FREDERICKTOWN,		1938
2.45		FREEPORT		1928
2.45		FREEPORT,		1970
2.750008	PIC	FREEPORT, / OHIO / ZIP CODE		1938
1.2153		FREMONT,		1917
2.45		FREMONT,		1913, 14, 17
2.455		FREMONT	CQ	1913
2.459		FREMONT		1913
4.4153		FREMONT,		1917. 22
4.4514		FREMONT		1930, 38
0.45144		FREMONT		1930
4.45441		FREMONT,		1922, 25, 26, 29, 30, 32, 38
4.45441		FREMONT		1917
2.4114		FRESNO,		1922
2.4564		GALENA,		1931
2.455		GALION		1923
2.459		GALION	CQ	1954
4.4173		GALION		1926, 31, 32
1.1544		GALLIPOLIS, O		1917
2.45		GAMBIER	CQ	1917SD
2.460005		GARRETTSVILLE, / OH		1979
2.4143		GATES MILLS,		1938
2.6154		GATES MILLS		1938
2.45	CON	GENEVA,		1938, 54
2.4513		GENEVA ON THE LAKE	CQ	1938, 42
2.459		GENOA		1938
4.4154		GENOA		1922, 32
4.4544		GENOA		1937
1.5543		GEORGETOWN	CQ	1932
2.4114		GEORGETOWN,		1932, 33
2.415		GEORGETOWN	CQ	1922
2.45	CON	GEORGETOWN,		1938, 48, 54, 58
2.451		GEORGETOWN	CQ	1917
2.615		GEORGETOWN		1938, 43

2.65		GEORGETOWN		1917
2.4554		GETTYSBURG,		1922, 26
2.63(5/9)		GETTYSBURG	CQ	1938
2.4114		GIBSONBURG	CQ	1922
2.4143		GIBSONBURG,		1926, 31
2.455		GIBSONBURG	CQ	1914
2.455		GIBSONBURG,		1926, 38
2.4563		GIBSONBURG	CQ	1926
4.4154		GIRARD		1922
2.63(5/9)		GLANDORF		1938
2.659		GLENCOE		1938
2.45		GLENMONT,		1931
2.45	CON	GLENMONT	CQ	1962
2.45		GLOUSTER	CQ	1926
2.45		GLOUSTER,		1914, 22, 26, 31, 32
2.4543		GNADENHUTTEN		1922
2.4163	PRO	GRAFTON,		1938
2.4553		GRAFTON,		1938
4.4154		GRAFTON	CQ	1922
2.415	CON	GRAND RAPIDS	CQ	1922, 32
2.451		GRAND RIVER,		1954, 62
2.456254	PIC	GREENFIELD	CQ	1954
2.415		GREEN SPRINGS	CQ	1931
2.55		GREEN SPRINGS	CQ	1938
2.63(5/9)		GREEN SPRINGS		1938, 54
2.45		GREENVILLE	CQ	1914
4.4543		GREENVILLE,		1922, 23, 26
2.451		GREENWICH,		1922, 23, 38
2.4643		GREENWICH, / OH		1968
1.1182		GRELTON	CQ	1938, 40, 43
2.455		GROVEPORT,		1931
2.4114		GROVER HILL	CQ	1926
2.4546	CON	GROVER HILL,		1943, 54
2.455		GYPSUM	CQ	1922
2.4564		GYPSUM,		1932
4.4154		GYPSUM		1922
2.45		HAMDEN,		1934
2.6564		HAMILTON	CQ	1931D
4.4153		HAMILTON,		1918, 22, 23
2.4574		HAMILTON		1908
4.45141		HAMILTON,		1917D, 22, 25D, 26, 30D, 32
4.4543		HAMILTON,		1917D, 22, 23
1.4593		HAMLER		1917

2.45	CON	HANNIBAL,		1954
2.615		HANOVERTON		1938
2.460005		HARPSTER, / OH		1968
2.63(5/9)		HARRISBURG		1938
1.1573		HARRISON,		1938
2.415		HARRISON,		1926
2.45		HARRISON,		1926, 38, 40
2.45	CON	HARRISON,		1954
2.451		HARRISON	CQ	1914
2.4553		HARRISON,		1938, 42, 43
2.464405		HARROD, / OH		1979
4.4543		HARTVILLE	CQ	1917, 22
2.45001		HASKINS	CQ	1932
2.454308		HAYESVILLE,		1977
2.45	CON	HEATH,		1957SD
1.5562		HELENA		1954
2.459		HELENA,		1940
2.4163		HICKSVILLE,		1922, 26, 31, 32, 38
2.45	CON	HICKSVILLE	CQ	1954
2.615		HICKSVILLE	CQ	1931D
2.659		HICKSVILLE		1938, 42
2.65954		HICKSVILLE	CQ	1938
1.1513		HILLSBORO,		1940
2.55		HILLSBORO	CQ	1908
4.4113		HILLSBORO		1925SD, 26
4.4514		HILLSBORO		1922, 26, 30
4.45434		HILLSBORO,		1922
2.45	CON	HINCKLEY,		1962
2.460005		HINCKLEY, / OH		1968
1.4174		HIRAM,		1922
2.4193		HIRAM,		1922, 30
2.45	CON	HIRAM,		1954
2.4553		HIRAM,		1938, 45
2.460005		HIRAM, / OH		1959D
2.5194		HIRAM	CQ	1917
2.45		HOLGATE		1917, 23
2.45	CON	HOLGATE,		1938, 54, 62
2.45004		HOLGATE		1922
2.4563		HOLGATE,		1938, 40, 43
2.456454		HOLGATE,		1938
2.45		HOLLAND,		1931
2.4563		HOLLAND,		1938
2.415		HOLMESVILLE	CQ	1932

1.217		HOYTVILLE,		1922
2.4163		HUBBARD,		1926, 38
2.45		HUBBARD	CQ	1923, 26
2.659		HUNTSVILLE		1942
2.4193		HURON,		1938
2.43(5/9)		HURON		1938
2.45	CON	HURON,		1938
2.4564		HURON,		1913, 17D, 26, 31, 34, 35, 38
2.63(5/9)		INDEPENDENCE		1938
4.4154		IRA		1923
2.45		IRONTON		1911
2.4564		IRONTON,		1911D
4.4544		JACKSON CENTER		1938
2.65		JACKSONVILLE		1932
2.4114		JAMESTOWN,		1932
2.455		JAMESTOWN	CQ	1926
2.451		JEFFERSONVILLE,		1938
2.4543		JEFFERSONVILLE	CQ	1938, 40, 42
2.4514		JEFFERSONVILLE,		1926
2.45		JENERA,		1938, 54
2.4183		JEWETT	CQ	1926
2.45		JEWETT	CQ	1926
2.455		JOHNSTOWN,		1938
4.4154		JOHNSTOWN		1917, 22
2.4114		JUNCTION CITY,		1938
2.63(5/9)		JUNCTION CITY		1938
2.4183		KALIDA	CQ	1926
2.45	CON	KALIDA,		1954
2.4553		KALIDA,		1938
2.4574		KANSAS,		1917
2.4543		KELLEYS ISLAND,		1938
2.55	CON	KELLEYS ISLAND	CQ	1938
1.215401		KENTON,		1954
2.4193		KENTON,		1922, 32
2.43(5/9)		KILLBUCK		1938
2.4556	CON	KILLBUCK,		1938
2.659		KILLBUCK		1938
2.4163		KINGS MILLS,		1926, 31, 32
2.45	CON	KINGSVILLE,		1954
2.455		KINGSVILLE,		1943
2.4562		KINSMAN		1917
2.4574		KINSMAN		1908, 13
2.460005		KINSMAN, / OH		1981

4.4154		KINSMAN		1922
2.4564		KIPTON	CQ	1932
2.4593		KIPTON	CQ	1928SH
2.659		LACARNE	CQ	1938
4.4544		LACARNE		1943
2.415		LAGRANGE,		1940
2.45	CON	LAGRANGE,		1954
2.456454		LAKEMORE,		1938
2.460005		LAKEMORE, / OH		1965
2.4553		LAKESIDE	CQ	1938
4.4544		LAKESIDE		1930, 31, 38, 40
2.4574		LA RUE,		1917
2.459		LA RUE		1926, 31
2.659		LA RUE		1926, 38
1.1173		LAURA,		1938
2.45		LEBANON,		1908, 12, 13, 17
2.455		LEBANON	CQ	1922
2.460005		LEBANON / OH	CQ	1971
4.4153		LEBANON		1926
4.4514		LEBANON		1922, 23, 26, 32
4.4543		LEBANON		1917D
2.45		LEESBURG	CQ	1932
2.659		LEESBURG		1938
2.45		LEETONIA,		1926, 28, 32
2.45	CON	LEETONIA	CQ	1962
2.615		LEETONIA		1938
2.659		LEETONIA	CQ	1940
1.1573		LEWISBURG,		1954
2.467005		LEWISBURG / OH	CQ	1954
0.5154		LEWISBURG	CQ	1926
2.415		LEXINGTON,		1938
2.45	CON	LEXINGTON,		1954
1.1543		LIMA,		1917D
2.43(5/9)		LIMA		1938, 54
2.46	CON	LIMA, / OH		1968
2.45742		LIMA		1912, 13, 14, 17D
4.4194		LIMA,		1922
4.41732		LIMA		1917D, 22, 23, 25D, 26
4.4183		LIMA		1922, 25D, 26, 32
4.41834		LIMA,		1916
4.45644		LIMA,		1925
2.415		LINDSEY,		1916, 26, 38
2.4184		LISBON,		1922

2.4174		LODI,		1926
2.4193		LOGAN	CQ	1926, 31, 43
2.43(5/9)		LOGAN		1938
2.43(93/62)2	PIC	LOGAN,		1940
2.45		LOGAN,		1926, 31
2.45	CON	LOGAN,		1931D, 38
2.4574		LOGAN,		1917, 17SD, 26, 31, 38
2.459		LOGAN	CQ	1938
1.1573		LORAIN,		1908, 19
2.45	CON	LORAIN,		1938, 54, 68
2.457		LORAIN,		1954
2.46	CON	LORAIN, / OH		1968
2.63(5/9)		LORAIN		1938
2.45		LORE CITY,		1938, 40
2.45	CON	LORE CITY,		1938
1.45434	PIC	LOUDONVILLE / OHIO. \\ FROM		1914
2.4143		LOUDONVILLE	CQ	1931D, 38
2.415	CON	LOUDONVILLE	CQ	1926, 38
2.45	CON	LOUDONVILLE,		1926, 31, 32, 38
2.55		LOUDONVILLE	CQ	1938, 54
2.615		LOUDONVILLE	CQ	1938
2.4163		LOUISVILLE,		1931, 32
2.615		LOUISVILLE	CQ	1954
7.4543	DLR	LOUISVILLE		1917, 22, 23, 26, 31, 32, 36
2.4163		LOVELAND	CQ	1926, 31
2.45		LOVELAND,		1926
2.4183		LOWELL,		1926, 31, 36, 38
2.45		LOWELL		1922
2.4553		LOWELL,		1938, 54
0.4562		LOWELL		1923, 26
2.65		LUCASVILLE	CQ	1917
2.63(5/9)		LUCKEY		1954
2.4114		LUDLOW FALLS,		1953
2.4553		LYNCHBURG	CQ	1938
1.1541		LYONS,		1938, 40
1.2183		LYONS,		1926, 32
2.460005		MACEDONIA / OH		1979
2.45		MADEIRA,		1937
2.63(5/9)		MADEIRA		1954
2.4563		MADISON	CQ	1940
2.460005		MAGNETIC SPRINGS / OH	CQ	1979
2.4183		MALTA,		1938, 40
2.45	CON	MALTA,		1964

2.456454		MALTA,		1938
2.4563		MALVERN	CQ	1938
7.4543	DLR	MANCHESTER		1917, 18
2.45	CON	MANSFIELD	CQ	1954
2.46	CON	MANSFIELD, / OH		1968
2.4544		MANSFIELD,		1954, 62
4.4543		MANSFIELD,		1917D
2.4114		MARBLEHEAD,		1938
2.45	CON	MARENGO,		1954
2.459		MASON		1938
1.45(62/63)	PIC	MASSILLON		1911D
2.4163		MAUMEE,		1926
4.4154		MAUMEE,		1922
2.4513		MAYFIELD HEIGHTS,		1926, 38, 43
2.45	CON	MCARTHUR		1938
1.15	CON	MCCLURE,	SMc	1957
1.4544		MCCLURE,	SMc	1936
2.45		MCCLURE,	SMc	1926, 35
2.659		MCCLURE		1942
1.6597		MCC(OMB)	CQ	1930
2.45		MCCOMB	SMc	1926, 31
2.4564		MCCOMB	SMc, CQ	1917
2.63(5/9)		MCCOMB		1938
2.659		MCCOMB	CQ	1931, 40
2.5154		MCCONNELSVILLE,		1922
2.511		MCCONNELSVILLE,		1914
2.5114		MCCONNELSVILLE,		1914
2.5514		MCCONNELSVILLE	CQ	1932
2.65	CON	MCCONNELLSVILLE	CQ	1938, 40
1.2544		MCDONALD,		1926
2.659		MCDONALD		1938
2.4114		MECHANICSBURG,		1926, 32, 38
2.4514		MECHANICSBURG,		1926
2.4543		MECHANICSBURG,		1926, 38
2.460005		MECHANICSBURG, / OH		1988
2.5114		MECHANICSBURG,		1908
2.515	CON	MECHANICSBURG,		1917, 22, 26
2.6114		MECHANICSBURG,		1913
4.4544		MENTOR	CQ	1922
7.4543	DLR	MENTOR		1917, 22, 23
2.411		METAMORA,		1923
2.4163		METAMORA,		1938, 40
2.45		METAMORA,		1938

2.45	CON	METAMORA,		1958, 62
2.455		METAMORA	CQ	1936
2.55		MIAMISBURG	CQ	1908
4.4513	PRO	MIAMISBURG	CQ	1922
4.4154		MIDDLEFIELD	CQ	1932
4.4544		MIDDLEFIELD	CQ	1926, 31
2.63(5/9)		MIDDLE POINT		1938
2.411		MIDDLEPORT	CQ	1926, 31
2.455	CON	MIDDLEPORT,		1932, 40
2.63(5/9)		MIDDLEPORT		1954
2.460005		MIDDLETOWN / OH	CQ	1968
2.55		MIDDLETOWN,		1954
2.4184		MILAN	CQ	1926
2.45	CON	MILAN,		1958
2.4553		MILAN,		1938
2.45742		MILAN	CQ	1931
2.4163		MILFORD	CQ	1931D
2.45		MILFORD		1917
2.45		MILFORD,		1926, 30, 31, 32
2.4563		MILFORD,		1938, 40
2.4574		MILFORD,		1922, 26
2.63(5/9)		MILFORD		1938
4.4543		MILLER		1922
2.4144		MILLER CITY,		1926, 32
2.4114		MILLERSBURG,		1923, 39
2.4143		MILLERSBURG,		1938
2.415		MILLERSBURG,		1922, 23
2.451		MILLERSBURG	CQ	1922
2.4553		MILLERSBURG,		1931, 32
2.615		MILLERSBURG		1938, 40
2.4513		MINERAL RIDGE,		1938
2.55		MINERAL RIDGE,		1965
2.615		MINERAL RIDGE		1938
2.4163		MINERVA,		1931, 34, 38, 40
2.45		MINERVA,		1926, 30, 31, 32, 38
2.4564		MINERVA,		1917
2.659		MINERVA		1938
2.45	CON	MINFORD,		1954
2.4183		MINGO JUNCTION		1926, 31, 31D, 37, 38
2.45	CON	MINGO JUNCTION,	JCT	1954
2.451		MINGO JUNCTION	CQ	1926
2.45(1/9)		MINGO JUNCTION		1938
2.5114		MINGO JUNCTION,		1938

2.65(1/9)		MINGO JUNCTION	CQ	1954
2.45		MINSTER	CQ	1917
2.4553		MINSTER,		1938
2.460005		MINSTER, / OH		1972
4.4154		MINSTER		1922
4.4174		MINSTER		1926, 31, 32
2.45	CON	MOGADORE,		1954, 55
2.4114		MONROEVILLE,		1922, 26
7.4543	DLR	MONROEVILLE		1917, 1950
2.45	CON	MONTEZUMA,		1963
2.455		MONTPELIER,		1938
1.2163		MORRISTOWN,		1940
2.45	CON	MORROW	CQ	1938
7.4543	DLR	MORROW		1917
2.45		MOSCOW,		1954
1.1543		MOULTRIE,		1922
2.4114		MOUNT GILEAD,		1923, 26, 30, 32
2.4143		MOUNT GILEAD,		1923, 26, 31, 32, 34
2.45446		MOUNT GILEAD,		1923, 25SD
2.4574		MOUNT GILEAD	CQ	1912
2.55		MOUNT GILEAD,		1938
2.5544		MOUNT GILEAD,		1954
2.615		MOUNT GILEAD		1938
2.6544		MOUNT GILEAD	CQ	1908
4.7562		MOUNT GILEAD		1917
2.4143		MOUNT ORAB,		1926, 38
2.4114		MOUNT SAINT / JOSEPH, OHIO		1938
2.515		MOUNT SAINT / JOSEPH, OHIO		1938
2.55		MOUNT SAINT / JOSEPH, OHIO		1954
4.65(13/44)		MOUNT STERLING		1917
1.2573		MOUNT VICTORY,		1938
2.460005		MOUNT VICTORY, / OH		1968
2.45		MURRAY	CQ	1917
2.4163		NAPOLEON,		1926, 31
2.45		NAPOLEON,		1926, 30, 32, 38
2.4574		NEFFS,		1923, 38
2.459		NEFFS		1958
2.411		NELSONVILLE	CQ	1917
2.415		NELSONVILLE,		1923
2.45		NELSONVILLE	CQ	1938
2.5544		NELSONVILLE,		1938
2.55	CON	NELSONVILLE,		1917, 22, 26, 31, 32, 37
2.659		NELSONVILLE		1938, 43SD

4.4513		NELSONVILLE,		1916, 22, 26, 31, 31D, 43
2.4193		NEVADA,		1938
2.45		NEVADA		1917
2.45	CON	NEVADA	CQ	1954
2.45741		NEVADA	CQ	1926, 31
4.4153		NEWARK		1922, 26
4.45441		NEWARK		1916, 17
2.660005		NEW BLOOMINGTON, / OH		1968
2.411		NEW BREMEN,		1921
2.4143		NEW BREMEN,		1926, 38
2.55		NEW BREMEN,		1954
2.63(5/9)		NEW BREMEN	CQ	1938
2.65		NEW BREMEN		1923
2.4114		NEW CARLISLE	CQ	1922, 26, 30, 38
2.515	CON	NEW CARLISLE	CQ	1926
2.65		NEW CARLISLE,		1917
0.4513		NEWCOMERSTOWN	CQ	1918
4.5513		NEWCOMERSTOWN		1926
4.6113		NEWCOMERSTOWN,		1926
2.4114		NEW CONCORD	CQ	1926
2.4553		NEW CONCORD,		1934
1.45	CON	NEW HOLLAND		1926, 38
2.4543		NEW KNOXVILLE,		1938
2.460005		NEW KNOXVILLE, / OH		1969
2.63(5/9)		NEW KNOXVILLE	CQ	1938
2.4553		NEW LEBANON,		1938
2.65(1/9)		NEW LEXINGTON		1938
7.4543	DLR	NEW LEXINGTON		1916, 17, 22, 25SD, 26
4.4514	CON	NEW LEXINGTON		1926
4.6543		NEW LEXINGTON	CQ	1922, 23
2.4114		NEW LONDON,		1922, 25SD, 26, 28SD, 30D, 32, 34
2.4143		NEW LONDON,		1926, 31, 38
2.55		NEW LONDON,		1908
2.63(5/9)		NEW LONDON		1948
2.4143		NEW MADISON,		1926
2.5114		NEW MARSHFIELD,		1922
2.4543		NEW MATAMORAS,		1938
2.5114		NEW MATAMORAS		1938
2.65(1/4)		NEW MATAMORAS	CQ	1918
2.455		NEW PARIS	CQ	1926
2.5114		NEW PHILADELPHIA	CQ	1908
2.6114		NEW PHILADELPHIA	CQ	1908, 14, 17
2.4183		NEW RICHMOND,		1938

2.55		NEW RICHMOND,		1954
2.65(14/94)		NEW RICHMOND	CQ	1938
2.63(5/9)		NEW RIEGEL		1954
4.4543		NEW STRAITSVILLE	CQ	1922
2.615		NEWTOWN		1938
4.4543		NEW VIENNA		1917, 31
4.4544		NEW VIENNA	CQ	1938
2.515	CON	NEW WASHINGTON	CQ	1916, 17, 22, 23, 25SH
2.551		NEW WASHINGTON	CQ	1926
2.5513		NEW WASHINGTON		1954, 59D, 68
4.4543		NEW WASHINGTON		1922, 26
4.5513		NEW WASHINGTON		1922, 23,
2.411		NEW WATERFORD	CQ	1932
2.45532		NEY,		1945
2.460005		NEY, / OH		1981
1.1193		NILES,		1911D
2.45742		NILES	CQ	1908
2.460005		NORTH BALTIMORE / OH	CQ	1968
2.411		NORTH BEND	CQ	1926
2.6114		NORTH FAIRFIELD,		1912
2.4143		NORTHFIELD	CQ	1938
2.55		NORTH KINGSVILLE,	N	1954
2.460005		NORTH LAWRENCE, / OH	N	1968
1.4513		NORTH LIMA		1938
2.63(5/9)		NORTH OLMSTED		1938
2.65(5/9)		NORTH OLMSTED		1925SH
2.4513		NORTH RIDGEVILLE,		1926, 31, 33
2.6114		NORTH RIDGEVILLE	CQ	1926
4.4153	PRO	NORWALK		1917D, 22, 23, 26
4.4514		NORWALK		1917D, 22, 26, 30D, 32
2.45	CON	NOVELTY,		1954
2.4154		OAKHARBOR	CQ	1926, 32
2.45		OAKHARBOR	CQ	1917
2.45		OAK HILL,		1926
2.4574		OBERLIN,		1911D, 12, 23
4.45434		OBERLIN,		1917D, 19, 22
1.2154		OLD FORT,		1954
2.4143		OLMSTED FALLS	CQ	1938
2.460005		ORIENT, / OH		1979
2.4514		ORRVILLE,		1912, 14
4.4154		ORRVILLE		1922, 23, 32
1.1143		ORWELL,		1938
4.4174		OSBORN		1922, 26, 32

4.4544		OSBORN		1926, 30, 31
1.115		OSTRANDER,		1942
2.45		OSTRANDER,		1913
2.43(5/9)		OTTAWA		1954
2.45		OTTAWA		1917, 21
2.45		OTTAWA	CQ	1930
2.45		OTTAWA,		1933, 37, 49
2.45	CON	OTTAWA,		1954
2.4564		OTTAWA	CQ	1930, 31
2.459		OTTAWA,		1938, 39, 44
2.63(5/9)		OTTAWA		1954
2.45		OTTOVILLE,		1926, 38
2.41842		OTWAY,		1917
2.45		OTWAY		1923
1.2573		OXFORD,		1917
1.4543	PIC	OXFORD		1917
2.45		PANDORA	CQ	1914
2.45451		PANDORA	CQ	1917, 22
2.4563		PANDORA,		1938
2.659		PANDORA	CQ	1938
4.451		PARLETT		1922
2.4563		PATASKALA	CQ	1926
2.415		PAULDING,		1918
2.45		PAULDING,	CQ	1922
2.4563		PAULDING,		1938
2.659		PAULDING		1938
2.4164		PAYNE,		1926, 38, 40, 42
2.4184		PAYNE,		1914
2.459		PAYNE,	CQ	1917
2.45		PEEBLES	CQ	1931
2.4144		PEMBERVILLE		1938
1.118305		PENNSVILLE,		1983
2.41932		PERRY,		1938
2.4574		PERRY,		1926, 30, 38, 40
2.415	CON	PERRYSBURG,		1917, 22, 23, 25SD, 26
4.4543		PERRYSBURG,		1926
5.151		PERRYSBURG,		1931
2.451		PERRYSVILLE		1931
2.4546		PERRYSVILLE,		1938
2.63(5/9)		PERRYSVILLE	CQ	1938
2.41932		PHILO,		1938
2.45	CON	PHILO,		1938
1.555		PICKERINGTON,		1936

2.45(4/9)	PIC	PICKERINGTON	CQ	1938
2.415		PINEY FORK	CQ	1926
2.45		PIONEER	CQ	1926
2.4574		PIONEER,		1922
2.459		PIONEER	CQ	1931, 38
2.464305		PIONEER, / OH		1954
4.4174		PIONEER		1922
2.457422		PIQUA		1908
2.415		PLAIN CITY,		1922
2.4154		PLAIN CITY	CQ	1932
2.55		PLEASANT CITY,		1938
2.63(5/9)		PLEASANT CITY	CQ	1938
2.4114		PLEASANT HILL,		1938
2.4143		PLEASANT HILL,		1931
2.451		PLEASANT HILL,		1926, 31
2.65		PLEASANT HILL		1931
4.4514		PLEASANT HILL		1926
2.45	CON	PLEASANTVILLE		1931
2.45		PLYMOUTH,		1926
2.4563		PLYMOUTH	CQ	1926, 38
2.45		POMEROY	CQ	1908
2.460005		POMEROY, / OH		1968
2.45		PORTAGE,		1938
2.651		PORT CLINTON		1962
2.45		PORTSMOUTH,		1954
2.55		PORTSMOUTH,		1954
2.63(5/9)		PORTSMOUTH		1954
3.5114	PIC	PORTSMOUTH, OHIO / REGISTRY DIVISION.		1908, 12
2.4514		POWHATAN POINT	CQ	1931
2.45(1/9)		POWHATAN POINT		1938
2.4543		POWHATAN POINT,		1940
2.65(14/94)		POWHATAN POINT	CQ	1938
1.4564		PROCTORVILLE		1938
2.659		PROSPECT		1938
2.659		PUT IN BAY		1938
4.4174		PUT IN BAY		1922, 24, 25SD, 26
2.455		QUAKER CITY,		1938, 40
2.4193		QUINCY,		1930
2.45		QUINCY,		1938
1.1544	CON	RACINE,		1938
2.4546		RANDOLPH	CQ	1954
2.45	CON	RAYLAND,		1954

1.4519		REPUBLIC		1938
2.45		REPUBLIC	CQ	1938
2.659		REPUBLIC		1938
2.45836		REYNOLDSBURG	CQ	1938
2.55		REYNOLDSBURG,		1954, 60, 64
1.1543		RICHWOOD,		1922
2.455		RICHWOOD,		1913
2.460005		RICHWOOD, / OH		1968
2.464305		RIDGEVILLE CORNERS / OH	CQ	1968
2.45		RIDGEWAY,		1938
2.4183		RIPLEY,		1926, 31
2.45452		RIPLEY	CQ	1917
2.4574		RIPLEY,		1922, 26, 32
2.459		RIPLEY		1931, 38
2.459		RIPLEY		1954, 58
1.4174		RISINGSUN	CQ	1912
2.4553		RISINGSUN	CQ	1938
2.65		RISINGSUN		1931
2.659		RISINGSUN		1938
1.2544		RITTMAN,		1926
2.659		ROCKFORD		1938
1.1173		ROGERS,		1938
2.45	CON	ROGERS,		1954
1.1174		ROME,		1922
1.4556		ROSEVILLE		1953
2.45		ROSEVILLE	CQ	1921
2.455		ROSEVILLE,		1926
2.659		ROSEVILLE		1938
4.4154		ROSEVILLE		1926
0.4542		ROSS		1938, 54, 63, 68
2.45	CON	ROSSFORD	CQ	1962
2.415		RUDOLPH,		1926, 38
2.45		RUDOLPH		1931
2.41(63/65)	PIC	RUSHTOWN		1954
1.45		RUTLAND,		1938
2.45		RUTLAND,		1930, 31
2.4174		SABINA	CQ	1914
2.4193		SABINA,		1938
2.45		SABINA,		1931, 38
2.45	CON	SABINA,		1938, 54
2.4563		SABINA		1917, 19, 22
2.4574		SABINA,		1921, 23, 26, 32
7.4543	DLR	SAINT CLAIRSVILLE		1917, 18, 22, 23, 30, 31, 32

2.455		SAINT HENRY	CQ	1938
1.1546		SAINT MARTIN,		1954
2.4114		SAINT MARYS,		1917
4.4113		SAINT MARYS,		1917, 22, 25SD
4.4513		SAINT MARYS		1917, 22, 23, 26
4.45134		SAINT MARYS,		1917
2.4574		SALEM	CQ	1908
2.460005		SALINEVILLE, / OH		1976
2.45	CON	SANDUSKY,		1968
2.63(55/64)		SANDUSKY		1957
2.63(5/9)		SANDUSKY		1938, 54
4.4514		SANDUSKY		1922, 23, 26, 39, 32
2.415		SARDINIA,		1938
2.4164		SARDINIA	CQ	1938
2.4553		SARDINIA,		1925SH
2.63(5/9)		SARDINIA		1938
4.4154		SARDINIA		1917
4.4544		SARDINIA		1925SH
1.158		SCIO,		1926
2.4546		SCIO,		1938
1.4172		SCOTT,		1914
2.63(5/9)		SEAMAN		1938
2.45		SEBRING	CQ	1914
2.455		SEBRING	CQ	1917
2.4564		SEBRING	CQ	1912, 13
7.4543	DLR	SEBRING		1917
2.45	CON	SEVILLE,		1958
2.451		SHARONVILLE,		1926, 31
2.455		SHARONVILLE,		1926, 38
2.4574		SHELBY	CQ	1913
2.415		SHERWOOD	CQ	1922
2.4163		SHERWOOD,		1938
2.467005		SHERWOOD, / OH		1968
2.45	CON	SHILOH,		1954
2.615		SHILOH		1938
2.45	CON	SHREVE,		1954
2.467005		SHREVE, / OH		1954
2.45		SIDNEY	CQ	1908
2.4564		SIDNEY,		1912, 13, 14, 16, 17
4.45434		SIDNEY,		1917, 22, 26
2.4163		SMITHFIELD,		1938
2.4154		SMITHVILLE	CQ	1931
2.4513		SOLDIERS HOME,		1938

1.157		SOLON,		1938
2.459		SOLON		1938
2.415		SOMERSET,		1929
2.45		SOMERSET	CQ	1917
2.45	CON	SOMERSET,		1938, 54
2.45004		SOMERSET	CQ	1917
2.4546		SOMERSET	CQ	1926, 30, 31
2.4553		SOMERSET,		1938, 43
2.4513		SOUTH CHARLESTON,		1938
2.5114		SOUTH CHARLESTON,		1926, 30, 38
4.4513		SOUTH EUCLID		1917D
4.4514	CON	SOUTH EUCLID		1922, 26, 31
2.451		SOUTH ZANESVILLE	CQ	1926
2.4513		SOUTH ZANESVILLE,		1940
2.5514		SOUTH ZANESVILLE,		1938
2.67(44/55)		SOUTH ZANESVILLE		1938
2.45		SPARTA	CQ	1926
2.659		SPARTA		1938
2.4574		SPENCER,		1926
2.615		SPENCER		1938
2.45		SPENCERVILLE	CQ	1922
2.451		SPENCERVILLE,		1926
4.4113		SPRINGFIELD		1914, 17, 17SD
4.4113		SPRINGFIELD,		1922
4.4513		SPRINGFIELD		1922, 23, 26, 30D
4.4513		SPRINGFIELD,		1917, 17D, 22, 23, 26
4.45134		SPRINGFIELD,		1917, 22, 23
4.4514		SPRINGFIELD		1926, 30, 32
4.4543		SPRINGFIELD,		1922, 25SD
7.51544	SLR	SPRINGFIELD		1914, 17, 17SD
0.45131		SPRINGFIELD	CQ	1926
2.4573		SPRING VALLEY	CQ	1938, 45
2.615		SPRING VALLEY		1954
4.4514		STERLING,		1922
2.4163		STOCKPORT,		1926, 31, 32, 34
2.4544		STOCKPORT	CQ	1938
2.41832	PIC	STOW,		1938
2.455		STRASBURG	CQ	1932
2.4554		STRASBURG,		1938
2.615		STRASBURG		1938, 54
2.659		STRASBURG		1945
2.451		STRONGSVILLE	CQ	1938
2.55		STRONGSVILLE,		1954

2.45	CON	STRUTHERS,		1954
2.45		STRYKER,		1926, 31D, 38, 40
1.1544		SUFFIELD,		1954
2.45		SUGAR CREEK,		1931
7.4543	DLR	SUNBURY		1917, 22, 23, 26, 31, 32
7.4543	SLR	SWANTON		1922, 23, 23, 26
1.1544		SYCAMORE,		1938
1.151301		SYLVANIA,		1926, 38
1.2173		SYLVANIA,		1954
2.4163		SYLVANIA,		1926, 31, 32
2.4544		SYLVANIA	CQ	1938
2.415		TALLMADGE	CQ	1938
2.460005		TERRACE PARK, / OH		1968, 79
2.55		TERRACE PARK,		1954
2.45		THORNVILLE	CQ	1938
2.615		THORNVILLE		1958
2.659		THORNVILLE		1938
2.4574	CON	TIFFIN		1908
2.467005		TIFFIN, / OH		1954
2.4114		TILTONSVILLE	CQ	1926
2.65		TILTONSVILLE		1926
2.4553		TIPP CITY,		1952, 54
2.6564		TIPP CITY		1938, 40
1.157		TIPPECANOE,		1954
1.2513		TIPPECANOE,		1954
1.4152		TIPPECANOE,		1938, 40, 43, 45, 54
1.25		TIPPECANOE CITY	CQ	1917
2.451		TIPPECANOE CITY,		1917, 22
2.4514		TIPPECANOE CITY,		1926, 32, 34
2.5114		TIPPECANOE CITY	CQ	1926
2.551		TIPPECANOE CITY,		1931, 34, 37
2.65(1/4)		TIPPECANOE CITY	CQ	1908
4.47(43/54)	PIC	TIPPECANOE CITY		1926
2.4163		TIRO		1938
2.45		TIRO		1938
2.4574		TIRO		1916
2.45742		TIRO	CQ	1938
4.4544		TIRO		1931
2.45		TOLEDO		1938
2.45	CON	TOLEDO, / OH		1962
2.45	CON	TOLEDO,		1938, 54, 59D
2.4574		TOLEDO		1911D
4.4173		TOLEDO		1912, 14, 17-17D, 22-23, 25-32, 37

4.4183		TOLEDO		1914, 17, 17D, 18, 20
4.454312		TOLEDO		1925D
4.4544		TOLEDO		1917D, 22
4.454402		TOLEDO		1931, 31D, 38, 54
4.45444		TOLEDO,		1922, 29
1.2542		TORONTO,		1931D
2.4163		TORONTO,		1926, 30, 33
2.45		TORONTO	CQ	1926, 32
2.45	CON	TORONTO,		1954, 62
2.659		TORONTO		1938
4.4153		TORONTO,		1923
2.45		TRENTON,		1932
1.1544		TROY,		1931D
1.1598		TROY	CQ	1923
1.4176		TROY	CQ	1925SD
1.4596		TROY		1927A
2.41551	PIC	TROY		1917, 22
2.41751	PIC	TROY		1917
2.41742		TROY,		1912
2.4194		TROY	CQ	1914, 23
2.45742	PIC	TROY		1908
0.41731		TROY		1922BH
2.65		UHRICHSVILLE,		1912, 14, 17
2.45	CON	UNIONTOWN,		1954, 63, 68
2.55		UNIONVILLE,		1908
2.4514		UPPER SANDUSKY		1917
2.55	CON	UPPER SANDUSKY,		1913, 14
2.4174		URBANA,		1914
2.45		URBANA		1917, 18, 22
2.459		URBANA,		1908
2.417		UTICA,		1926
2.41832		UTICA	CQ	1931
2.4574		UTICA	CQ	1912
2.459		UTICA	CQ	1938
2.45	CON	VAN WERT,		1954
2.659		VAN WERT		1954
2.45		VERMILION	CQ	1926
2.43(5/9)		VERONA		1938
0.45626		VERONA		1962
2.4114		VERSAILLES,		1926
2.4544		VICKERY,		1954
2.43(5/9)		VIENNA		1958
2.460005		VINCENT, / OH		1967

2.45		VINTON,		1913
1.1547	CON	VINTON,		1938, 54
2.4163		WAKEMAN	CQ	1938
2.4553		WAKEMAN,		1938
2.4542		WAPAKONETA,		1917
2.4563		WARREN		1908
4.4153		WARREN		1916, 17
4.4173		WARREN,		1916, 17, 23, 26
4.45434		WARREN,		1916, 17, 18, 22, 23
4.4544		WARREN		1926
4.4574		WARREN		1917
2.4114		WARRENSVILLE	CQ	1926, 38
2.4543		WARRENSVILLE	CQ	1940
2.45	CON	WARSAW	CQ	1954
4.4513		WASHINGTON / C. H., OHIO		1929
4.4514	CON	WASHINGTON C.H.,		1931
4.5513		WASHINGTON C. H.		1926
4.6714	PIC	WASHINGTON C. H.		1917, 22
0.4513		WASHINGTON / COURT HOUSE		1916
1.1544		WATERVILLE,		1924
2.4163		WATERVILLE	CQ	1938
2.659		WAUSEON		1938, 40
1.1574		WAVERLY,		1949
1.45736		WAVERLY		1917
1.25		WAVERLY		1918
1.25		WAYNE,		1922, 26, 31, 38
2.45		WAYNE,		1932
2.4564		WAYNE,		1938, 40, 48, 55
2.460005		WAYNESBURG, / OH		1954
2.615		WAYNESFIELD	CQ	1954
2.63(5/9)		WAYNESFIELD	CQ	1938
2.4183		WELLINGTON,		1938
2.63(5/9)		WELLINGTON		1938
2.67(1/5)	PIC	WELLINGTON		1938
2.45		WELLSTON		1912
2.460005		WELLSVILLE, / OH		1968
2.4513		WEST ALEXANDRIA,		1938
2.65(44/94)	PIC	WEST ALEXANDRIA	CQ	1938
1.451		WEST CARROLLTON,		1914
2.4513		WEST CARROLLTON,		1926, 30, 31
2.45134		WEST CARROLLTON,		1926, 28SD, 30, 31, 32, 33
2.45(14/94)		WEST CARROLLTON		1954
2.47(15/63)		WEST CARROLLTON		1917, 21

2.5114		WEST CARROLLTON,		1926, 31, 31D, 37
2.615		WEST CARROLLTON	CQ	1921
2.65		WEST CARROLLTON		1926, 31, 38
2.411		WESTERVILLE	CQ	1914
2.65		WESTERVILLE		1917
2.4543		WEST FARMINGTON	CQ	1954
2.63(14/45)		WEST FARMINGTON	CQ	1917
2.4543		WEST JEFFERSON	CQ	1938
2.4513		WEST MANSFIELD,		1938
2.460005		WEST MILTON / OH	CQ	1945
2.55		WEST MILTON	CQ	1938
2.63(5/9)		WEST MILTON		1938, 42
2.65		WEST MILTON	CQ	1926
2.4193		WESTON,		1938
2.659		WESTON		1938
1.1573		WEST POINT,		1954
2.4114		WEST SALEM,		1931
2.4163		WEST UNITY	CQ	1922, 30
2.455		WEST UNITY,		1917
4.4174		WEST UNITY		1926
2.4143		WHITEHOUSE,		1938, 40
2.45		WHITEHOUSE,		1954
2.4163		WICKLIFFE,		1923, 26, 38
2.45		WICKLIFFE	CQ	1932
2.4553		WICKLIFFE,		1938
2.460005		WICKLIFFE, / OH		1978
4.4154		WILBERFORCE		1922
4.4543		WILLARD		1917D, 22, 26
2.555		WILLIAMSFIELD,		1954
1.1543		WILMOT,		1912
2.65		WINCHESTER	CQ	1917
2.460005		WINDHAM, / OH		1968
1.4547	CON	WINTON,		1938, 54
2.45	CON	WOODVILLE,		1954
2.45009		WOODVILLE,		1965
2.455		WOODVILLE,		1931
2.45634		WOODVILLE		1926, 38
2.65		WOODVILLE		1917
2.659		WOODVILLE		1938
0.6*5(45/73)		WOODVILLE	CQ	1926
2.45		WOOSTER,		1908
2.460005		WOOSTER, / OH		1966
1.1183		WORTHINGTON,		1922

2.4114		WORTHINGTON,		1931
2.451		YELLOW SPRINGS	CQ	1917
2.4514		YELLOW SPRINGS,		1922, 25SD, 30, 32
2.515	CON	YELLOW SPRINGS,		1931
2.415		YORKVILLE	CQ	1923
4.4513		YOUNGSTOWN		1922, 26, 32
2.4574		XENIA,		1917